

The Halton
Jubilee Memorial
Garden –
A History
From 1920s to 2022

Janet Theobald
Halton Gardening Group

Introduction

- Research looking into the origins of Halton Jubilee Memorial Garden, sited on the corner of Foundry Lane and Low Road, and its surroundings.
- In its early days it was a kitchen garden. Later it was donated to the village by the Rector. It was called variously the Jubilee Garden, the Jubilee Memorial Garden and is often known as the Memorial Garden.
- The research includes the Rector and Rectory, with archive material from Lancaster Guardian between 1930's to 1950's, later material from the Halton Prattle 2001 onwards, books by Bill Hosfield and Nancy Beck, Rev J Houghton, images from books in Lancaster Reference Library, and photographs provided by local residents and Gardening Group Members.

Memorial Garden Origins



Below the crossroads in the 1920s

The first of the cottages on the left was the Post office. The Cross of the War Memorial stands out against the background of the barn behind. This barn was converted into a dwelling in the mid 1930s, and those beyond were converted in the 1960s.

Photo of Church Brow from **Halton in Days Gone By 1875-1945**
by **Bill Hosfield and Nancy Beck**

To the left of the War Memorial is the site which would become
the Memorial Garden

The site of the Memorial Garden

Rectory Farm viewed from Castle Hill, 1920s

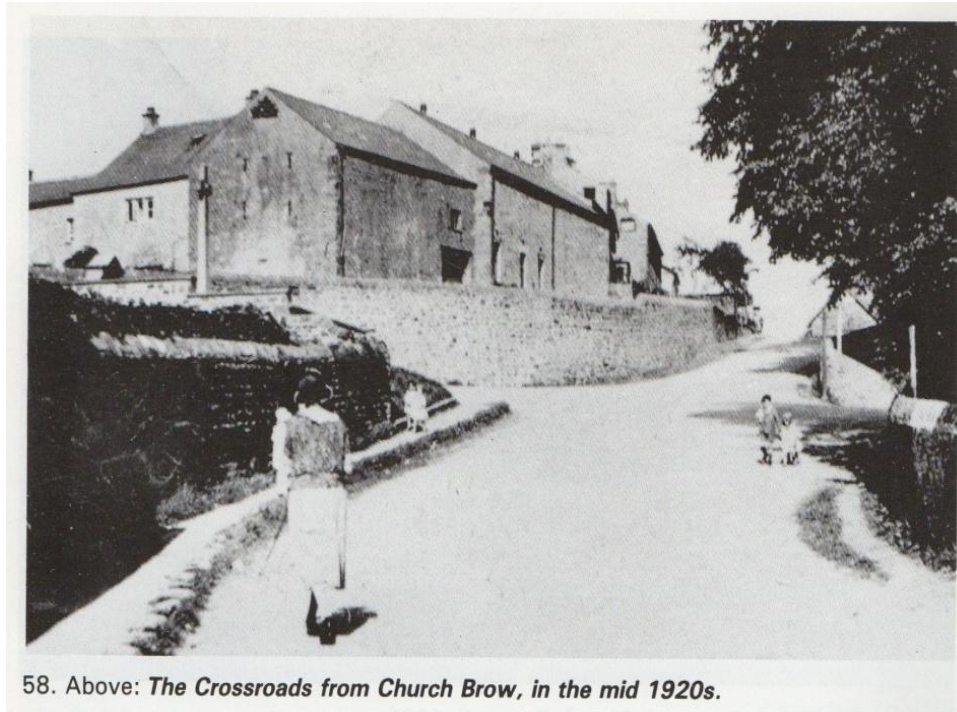
The corner of what would become the Memorial Garden can be seen on the right, beside Foundry Lane.

The tall trees to the right grew in the 'Plantation', between High Road and Low Road. They were cut down in about 1930.



**From Halton in Days Gone By 1875-1945
by Bill Hosfield and Nancy Beck**

The War Memorial and the Memorial Garden



58. Above: *The Crossroads from Church Brow, in the mid 1920s.*

**From A Look at Old Halton by Bill Hosfield Book 1
From Broken Beck to Cowband Row**

P42, photo of The Crossroads from Church Brow in the mid 1920s.
Foundry Lane goes to the left, High Road ahead, and Low Road to the right.

Behind the wall on the left is the kitchen garden belonging to St Wilfrid's House, and on the corner is the War Memorial.

The War Memorial was erected to the memory of the men of Halton with Aughton who fell in the Great War of 1914-18. It was dedicated by the Rector on 27th March 1920.

In 1924 the War Memorial was taken over by the Parish Council who are responsible for its upkeep. A tablet was added bearing the names of those who died in the Second World War.

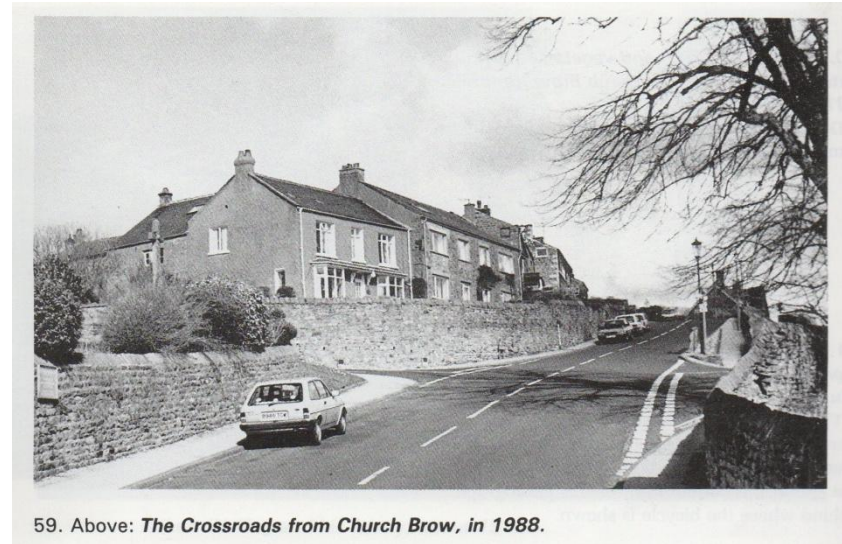
Across Foundry Lane the building is Rectory Farmhouse, its adjoining cottage, and barns.

P43 photo of The Crossroads from Church Brow in 1988

On the left the old kitchen garden was replaced by a public garden given to the village in 1935 by the rector, the Rev. J.H. Hastings.

This gift was to commemorate the silver jubilee of King George V and Queen Mary, and in memory of his parents, Samuel and Sarah, and his brother, Capt. G.H. Hastings, as shown on the plaque on the wall of the Memorial Garden.

Photo above dated 1988 from A Look at Old Halton by Bill Hosfield Book 1, and photo below taken January 2022.



The plaque on the wall
in the Memorial Garden



In the Prattle October 2005, Bill Hosfield refers to the 80th anniversary of the Halton War Memorial Institute which opened on 24th October 1925.

It was built on donated land with money from a subscription fund, to perpetuate the memory of the 26 men from the parish who lost their lives while serving in the Great War 1914-18 and of the 113 parishioners who also served.

Their names are carved on an oak panel displayed in the building, which became called the Halton Social Club.

Articles from the Lancaster Guardian

Lancaster Guardian - Friday 19 March 1937

Halton Parish Meeting and election of the Parish Council took place in the School . Mr. A. Shaw presided. The following were declared legally elected: Messrs. S. Burrow, Ed. Burrow, J. Fox. Ed. Green, J. Robinson. J. Teasdale. A. E. Wilkinson, and W. Wiper. Of the retiring council Messrs. C. Brodrick and H. L. Hirst did not seek re-election.

The Clerk (Mr. J. F. Beck) presented the Parish Council accounts, which showed a balance of £4 12s 1d. after an expenditure of £13 16s 4d which included £6 instalment to the Coronation festival fund.

Mr. J. Thornton inquired as to the cost of the Jubilee Memorial Garden as no mention had been made of it. The Clerk replied that at present it was not a charge on the rates. The Chairman said that when that time came the Council would have to call meeting and get the consent of the Parish.

Lancaster Guardian - Friday 23 April 1937

Halton Parish Council meeting was held in the School. A precept upon the Lunesdale District Council was authorised for £55 for Coronation celebrations, and to be paid over to the Celebration Committee. It was decided that the **Jubilee Garden** be officially opened by the Chairman of the Parish Council.

Lancaster Guardian - Friday 7 May 1937

Public will assemble at the School and walk to St. Wilfrid's Church for divine service. Opening of the Jubilee Garden: Mrs. J. H. Hastings will plant a commemorative tree. Afternoon: A fancy dress precession through the village to the sports field lead by Mr. J. Robinson. Prizes will be awarded for the best decorated house. Tea in the School for residents who are 60 years of age or over. Later there will be an entertainment and a whist drive and dance.

Lancaster Guardian - Friday 14 May 1937 - Opening the Garden Ceremony

The Halton programme commenced with a service at the Church conducted by the Rector (Rev. J. Hastings). This was followed by the opening the Memorial Garden when the Rector was asked by Mr. E. Green, chairman of the Parish Council to unlock the gate and declare the Garden open, to commemorate the occasion of the Coronation. Mrs. Hastings planted a tree in the Garden, before crowd of villagers.

Was this the cherry tree?

Probably not as it was a youngish tree in 2007.

Image John Blowes 2007



At midday the decorations were judged and prizes were awarded to Messrs. T. Aldren, T. Redfern, H. Bateson and J. Teasdale.

Headed by the village band, conducted by Mr. R. Nixon, the fancy dress procession wended its way round the village to a field lent by Mr. J. Robinson where the costumes were judged.

A full programme of sports was carried out both for children and adults and tea was provided for the children.

The Old Folks tea in the school was followed with a concert and dance and in the Memorial Institute a whist drive was held.

Lancaster Guardian - Friday 25 June 1937

Halton - Coronation Celebration Meeting - A balance of £4 0s. 9d. was revealed in the Halton Coronation Celebrations account at the final meeting of the committee in the Memorial Hall on Monday. Receipts were £61 and expenditure £56 19s. 3d.

It was decided to purchase two seats with the remainder and place the seats in the **Jubilee Garden** to commemorate the Coronation. The balance-sheet was approved on the motion Mr. Glascock seconded by the Rector (Rev. H. Hastings) Mr. Green presided.

Lancaster Guardian - 16 September 1937

Parish Council Meeting. The Clerk presented the accounts for the **Jubilee Garden** which were passed.

Lancaster Guardian - 5th November 1937

Parish Council Meeting Mr. E. Green presided, and there were also present Messrs. S. Burrow, W. Wiper, J. Teasdale, Ed. Burrow, J. Robinson, and the clerk (Mr. J. P. Beck). Mr. Green reported a balance for the Coronation celebrations of £4 4s. 5d., which was to be handed over to the Parish Council account.

It was decided that Mr. J. Hodgson be asked to undertake the duties of looking after the Memorial Cross and the Jubilee Garden for the year 1938 on the present conditions.

It was decided to accept the generous offer of Mr. A. Shaw, an ex-chairman of the Parish Council, of the gift of a memorial gate for the Jubilee Garden, and to send him a letter of thanks.

Presumably this is the very metal gate at the entrance now.



Image Janet Theobald (2021)

Lancaster Guardian

Friday 10 September 1937

An article about Castle Hill was in the newspaper accompanied by the above drawing of the hill.

The Memorial Garden is visible at the bottom right.

The drawing was by a local artist Mr G Richmond.



Lancaster Guardian - Friday 22 June 1945

Halton Parish Council meeting was held, those present were Messrs. Green, Lindley, S. Burrow, Robinson, Wrathall and Beck (clerk). Mr. Thomas Wrathall was elected to fill a vacancy.

Amongst matters dealt with were lighting, the care of the Memorial Garden and Cross, housing sites and allotments.

Note: that newspaper archives for the Lancaster Guardian go up to 1956 only online.

Morecambe Guardian - Friday 13 December 1957

Part Time Gardener for Memorial Gardens, Halton. Applications to Clerk. Halton Parish Council, before January 4. 1958.

The Reverend Hastings and the Rectory



Images provided by Trevor Green

Extracts from Bill Hosfield's Jottings in the Prattle, June 2006 and August 2006

Reverend Samuel Hastings served as rector until his death in 1901. His son John Harold Hastings became rector in 1903 and continued until 1938.

In the mid 16th Century the site of the present Halton Hall was described as the rector's house, with barns, stables, outbuildings and lands. By 1698 the rector had neither house nor land but a tithe barn of 3 bays. These became incorporated into the Old School on High Road.

By the early 19th century the problem arose of where the new rector Thomas Mackreth was going to live. The patron, R.F. Bradshaw, agreed to build a house for the rector who have to pay rent.

The house, St Wilfrid's Hall, was completed in 1828. It was extended and remodelled between 1845 and 1891. There were further alterations during the 1930s-1940s. In 1986 the building was given permission for change of use from house to nursing home. The remains were incorporated into the former St Wilfrid's Nursing Home.

Site of Memorial Garden, possibly an outbuilding, storage or potting shed?
Ordnance Survey 6"-to-1-mile map of Lancashire, published 1848



**Print of Halton Rectory 1832 by T Allom, 'Lancashire 150 Years Ago'
compiled by Cliff Hayes
in Lancaster Reference Library**



Halton Rectory, Nr. Lancaster (T. Allom) 1832

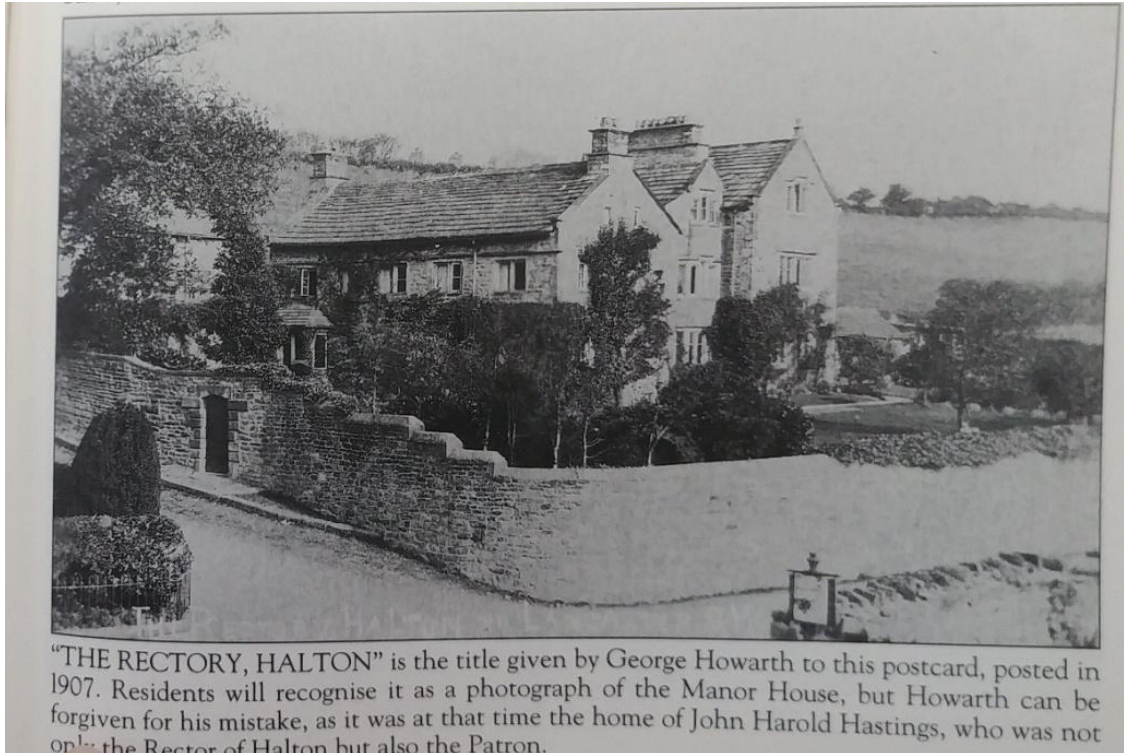
Thomas Mackreth lived there until his death in 1870, and so did his successor Samuel Hastings. The house was known as 'The Rectory' during this time but was never owned by the church, always owned privately.

Members of the Hastings Family seated outside Halton Rectory, now St Wilfrid's Hall

Images provided by Trevor Green



**The Manor House/Rectory from 'Old Photos of Lancaster and the Lune Valley', compiled
by Robert Alston.
Lancaster Reference Library**



When John Harold Hastings became rector, he lived in the Manor House. He was the owner as his father had purchased it some years before. Subsequent rectors lived elsewhere and the house was not considered suitable for the church to convert to a rectory.

Some years later the parish first obtained a house in Carus Park. In due course when the Commissioners brought out a scheme to help with the building of new parsonage houses, plans were made to build a rectory.

Land was unexpectedly donated by Mr Butler Cole near the Lunesdale Estate and the new rectory was opened by Sir James Brown, the secretary of the Church Commissioners on 18th April 1953.

This was the first time the church had owned a purpose built home for the rector in Halton.

Later the former rectory became the present doctor's surgery on High Road.

Some information comes from a booklet Halton Celebrates 1877-1977 compiled by John Houghton, which was informed by the 'Annals of Halton' published by Mrs S.L. Hastings.

HALTON PAGEANT RE-UNION.



Picture taken at a re-union held at the Empire Cafe, Lancaster, on Thursday, of members who took part in the Halton Pageant 25 years ago, organised by the Rev. J. H. Hastings, Rector, who is seen seated in the centre.

Lancaster Guardian 29th October 1937

Happy memories of the 1912 Halton Pageant were revived at the Empire Cafe, Lancaster, when the Rector of Halton, the Rev. J. H. Hastings, M.A., who was Pageant Master, and who also took the parts of "Dick" and the Hermit, entertained performers and all connected with the pageant to a dinner and entertainment. Reverend Hastings is seated in the centre.

Proposing the health of the Rector, Mr. A. Willis remarked that Mr. Hastings had “fathered” three of the most successful pageants ever held in this country.

The company joined in the singing of "For He's Jolly good Fellow” and when Mr. Hastings rose to reply was greeted with loud applause. He said thirty years ago he watched in Oxford, the first pageant of the late Mr. Frank Lascelles, the greatest pageant master England ever had.

He was fired with enthusiasm to produce a pageant in Lancaster. He wrote to the local press advocating a local pageant but met no response from the public so he went to Halton with the idea, with the result that five years later Halton held the finest pageant in England for place of its size. Directly from it sprang the first Lancaster pageant which owed much to the late Ald. W. Briggs, who was war-time Mayor of Lancaster.

The reason why he had arranged the dinner was that he had been proud and pleased to have taken part in such shows and he desired to extend to all players and all connected with the Halton pageant a gesture of his gratitude to them.

Lancaster Guardian 22 April 1938 (excerpt)

A remarkable association with the Vicariate of St. Wilfrid's Church, Halton, will be broken in August by the retirement through ill health of the Rector, the Rev. J. H. Hastings. He announced his decision at the meeting of the Parochial Church Council, when general regret was expressed.

Mr. Hastings was born at St Wilfrid's, Halton, 62 years ago, his father being Rector of the ancient parish, a position he held for 31 years.

He was educated at Marlborough and Magdalen College, Oxford, coming to Halton as Rector in 1903. Whilst at Oxford Mr. Hastings became interested in drama, and he was a member of the University Dramatic Society.

He ran the Halton pageant in 1912 and the Lancaster pageant in 1913. When the Lancaster pageant was revived in 1930 he wrote the script.

Son of an Irishman, he is the eldest of three brothers, one of whom was killed in the War. The other is a doctor in Monmouthshire. He married Miss Katie Charlotte Egan, of Halton Park, and they have two children. His son is in post at Tunbridge Wells and his daughter is married to Mr. Richard Storey.

Halton Rector Retiring

A REMARKABLE association with the Vicariate of St. Wilfred's Church, Halton, will be broken in August by the retirement through ill-health of the Rector, the Rev. J. H. Hastings.



The Rev. J. H. Hastings.

Articles from The Prattle

Prattle 2 August 2001

Memorial Gardens

Councillors agreed that a donation of £30 towards plants should be sent along with a letter of thanks to Mr. Gornall, St. Wilfrid's Lodge, for the sterling work he has carried out recently in and around the memorial gardens.

Prattle 3A November 2001

BRIEFLY...

Sometime between Monday 15 October and Thursday 18 October a large wooden seat disappeared from the Memorial Gardens in Foundry Lane.

If anyone has any information please contact Carol Slinger, Parish Council Clerk on 811027.

Everyone is welcome to attend

The Remembrance Service

on

Sunday 11 November,

at 11am

at

The War Memorial, Foundry Lane.

Prattle 8 October 2002

WAR MEMORIAL

Plans for entry to the memorial gardens via the memorial are going ahead with minimal alterations. It will provide a safe platform for worship, better access for wheelchairs and encourage use of the gardens.

Prattle 11 February 2003 (excerpt from Parish Council matters)

The intention of making the memorial gardens accessible via the memorial cross and to update the gardens is still on the cards... with a ramp and steps... and will offer a more inviting entrance to the gardens without altering the frontage.

The plants and garden although looked after very well by Mr Gornall are all very old now and need a new lease of life. Amateur plans have been drawn up with a planting scheme to give interest all round.

Prattle 21 June 2006 (excerpt)

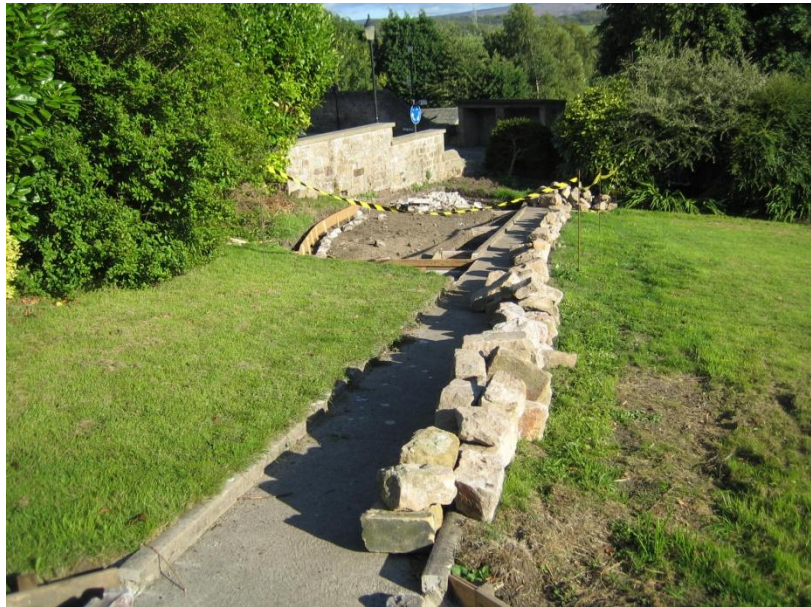
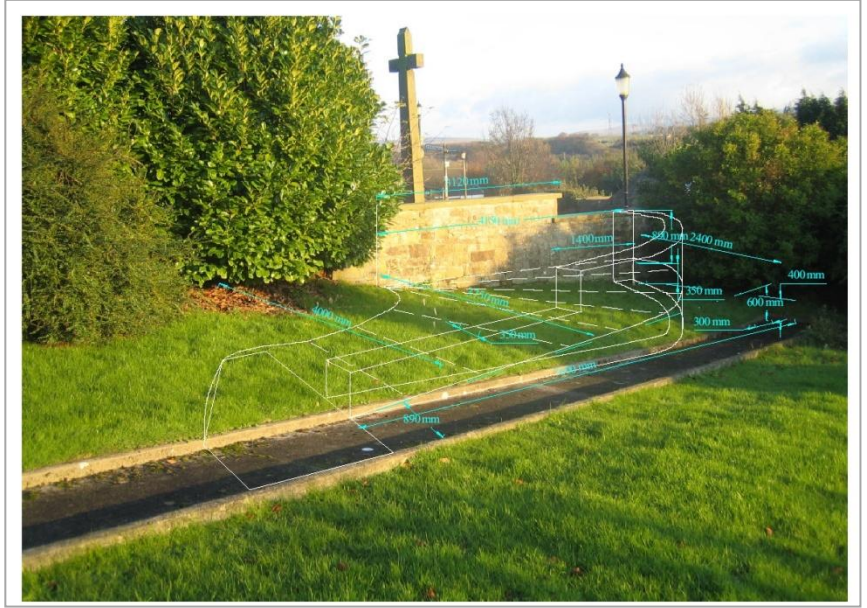
The War Memorial link to the Memorial garden received planning permission in October last year.... Chartered Engineer, John Blowes, who has volunteered to co-ordinate the project in close liaison with the Halton Community Improvement Group, drew up the plans, on behalf of the Parish Council, A number of volunteers have already offered their support... Funding for this self-help project is being undertaken by HGIS and should be in place for a midsummer start.

War Memorial Photo Record 2007

Selected photos of the refurbishment 2006-7 kindly provided by John Blowes



Prattle 21, June 2006







PARISH PRATTLE



Issue No. 40

Halton-with-Aughton

Dec 2007 / Jan 2008



Jack Armstrong, cutting the ribbon to open the restored War Memorial & Gardens

Welcome to our bumper festive edition!
The village recently saw the opening of the restored War Memorial Garden. To read more turn to pages 42-44....

With Best Wishes from all the Prattle team
for A Merry Christmas and A Happy New Year!!

Jan & Dave
Editors

Prattle December/January 2006

For some time now a small band of volunteers, led by John Blowes, has been working hard to refurbish and repair our War Memorial, to restore order to the Memorial Gardens, part of which had become rather overgrown, and to create a disabled access to the War Memorial itself.

The results of their efforts completed in time for this year's Remembrance Service are now there for everyone to see. One cannot fail but to be impressed by the improvements, and possibly for the first time ever, everyone attending the Service of Remembrance has been able to stand safely off the road.

On behalf the Parish Council and the whole village I would like to sincerely thank all the volunteers for the much appreciated efforts. Hopefully they will act as an example to encourage other groups to come forward to carry out other projects to continue the drive to create a greener and caring community.

Cllr Fred Ayres, Chair of Parish Council



JUBILEE GARDEN AND WAR MEMORIAL LINK

We were all pleased to know that the Memorial and Garden link is approved of, and especially that the Remembrance Day congregation was able to move off the highway.

Time seems to have gone very quickly from obtaining Planning Permission and starting work in June 2006, to completing construction and clearing shrubbery by 27th Oct 2007, with two weeks to spare. I thought it would be a good idea to share some information about the project with you, although first and foremost may I express my thanks to all of the volunteers giving their free time (and humour), mostly on Saturday mornings through the Summer and Autumn months of 2006 and 2007.

Cyril Potter, Brian Holman, Chris Baxter and Steve Brant - with generator and stone cutting gear, as regulars; Gill Brant for her patience and skill in wall pointing, Harry Gornall for repainting the gate, Carol Slinger - not only digging foundations, but also for routine and fast-track ordering of materials. Those assisting when they could; Steve Holmes, Paul Crawford, Carl Richardson, Maureen Richardson, Ray Gilbert,

Jeff Clarke, Simon Armistead and Carol Holman. Last, but by no means least, for a sterling effort and reliable service ~ Brian's cement mixer!

A few facts: The wall foundations are deep enough for a sturdy house, so no chance of subsidence.

Access for wheel chairs is via the Jubilee Garden gate ramp, a ramp that has actually been laid twice. The first one was not quite right, so it became hardcore building the height under the flagged area.

The new stone flags are from a Kirkby Lonsdale Quarry and, whilst looking quite light in contrast to the original, they readily absorb dirt from shoes and will therefore soon tone down. A pity really, as the colours when wet are impressive! Interestingly, cutting the original stone flags during the process of replacing those stolen, revealed that they were also light in colour when new.

The cobbles in the new and old areas are mostly moraine derived, as is typical of the area (glacially formed accumulation of unconsolidated debris - as we are all aware), rather than sea or river stones that are, no doubt, from the same source, but more rounded, and seldom with one good "end on" flat surface.

We all look forward to seeing the area used to its full, indeed those garden forms are ideally located, as the sun moves round through the day.

John Blowes - Project Leader



Watercolour by Cyril Potter 2007



Prattle 47 February 2009 (excerpt)

The Memorial Gardens or are they the Jubilee Gardens? Opinions differ as to the official name for the garden area adjacent to the War Memorial in Halton.

Whichever name you choose the gardens are a small area of relative tranquillity within the conservation area, beneath the Norman motte and bailey castle and close to the historic St Wilfrid's Church. The Parish Council are keen to maintain the gardens for the benefit of all who have a desire to avail themselves of this delightful space.

Personally, I've used the little park for years (post Norman motte but pre mini roundabout). I think it is a great little area for relaxation, and it is usually quiet and tranquil. However, even in my short pondering period, the traffic has increased beyond belief, and without doubt some of the peace and quiet has been lost - but not completely. I think the area should be used by all for leisure, pleasure and escape: all with consideration for others, of course. After all, that's what the Memorial reminds us of; how fortunate we all are to have the freedom to choose, and how others made sure we have the choice.

Cllr Paul Woodruff

Halton Gardening Group

Our project to refurbish the
Memorial Garden

Conservation of the garden

What have we got?
Why does it matter
What's happened to it?

We have a community resource, within the conservation area.
It's part of the village and has historical significance
It's a large area, became overgrown and was difficult to manage

What can we do

Raise the profile, raise funds and plant up the garden anew,
bearing in mind sustainability and future maintenance

Who can be involved?

Halton Gardening Group members and anyone in the village

Options:
Preservation
Reconstruction
Adaption
Restoration

Preservation – not to leave the garden as it was
Reconstruction – unnecessary to have the beds re-sited or removed
Adaption – to make it easier to look after and add some new features to enhance the garden
Restoration – refurbishment, new plants and features – we can't restore it to how it looked in the 1930's as we don't have any pictures or plans.

Before the refurbishment



Image Janet Theobald February 2021



Images Janet Theobald October 2020



Our aims

Our aim was to design a sensitive modern garden space in keeping with its stated purpose as a Memorial Garden and as an extension to the village War Memorial.

After this project was proposed and accepted by the group, we produced a strategy document, and following agreement from Parish Council, we started to source and apply for funds, researching plants and engaging the community.

Aims and objectives:

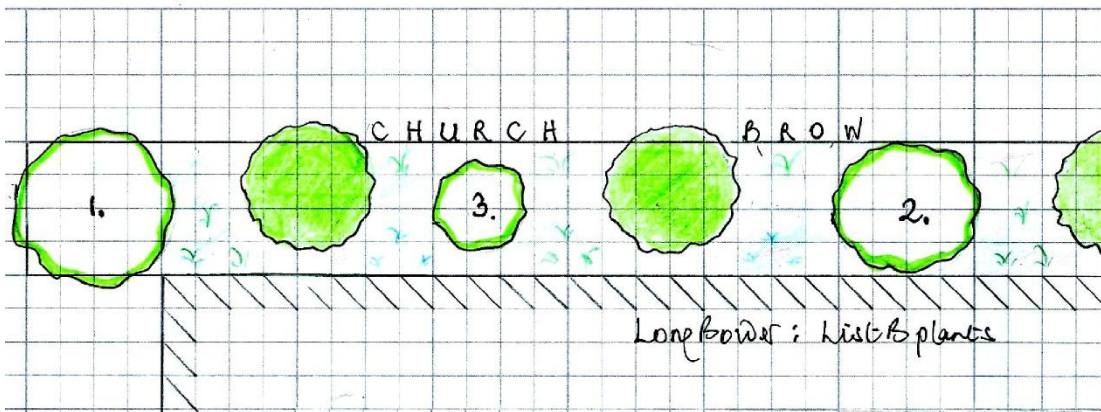
To provide an appropriately attractive garden and surround for the Village War Memorial.

To improve the appearance of the Memorial Garden throughout the year.

To consider the wider needs of the environment and nature.

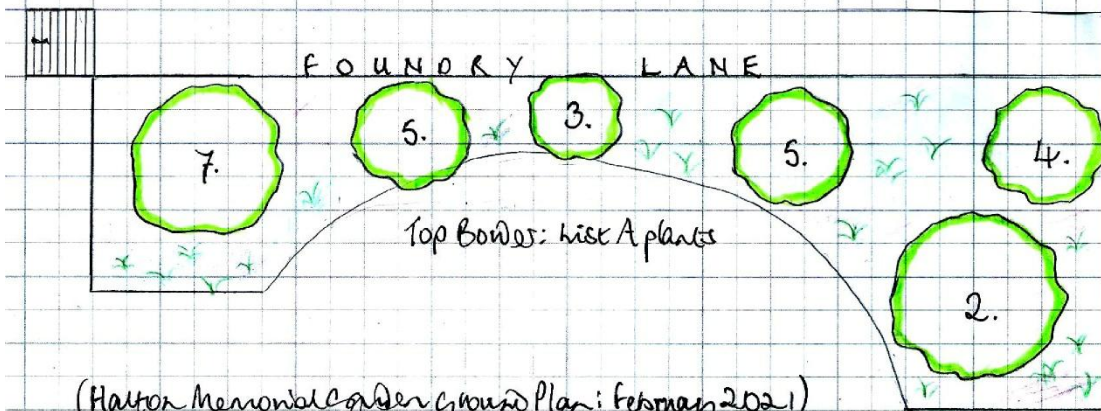
To make the garden sustainable and more manageable for HGG members and others to maintain.

To engage with, and encourage, community involvement in this focal point of the village.



- 1 Spiraea Arguta "Birds Nest"
- 2 Philadelphus "Bele Etoile"
- 3 Syringa Mezeri "Palmer"
- 4 Rosa "Pix"
- 5 Rosa "Iceberg"
- 6 Hydrangea serrata "Elicoid"
- 7 Cornus Purpurea "Nectar Beauty"

Approximate scale:
 $\frac{1}{2}$ inch = 1 metre



(Horton Memorial Garden Ground Plan: February 2021)

Excerpt from The Prattle 117 (Feb/March 2021)

The Halton Gardening Group have been busy refurbishing the Memorial Garden, with support from the Parish Council, contractors and other willing volunteers. Over £2000 has already been raised from grants and last year's plant sale to help with the restoration... This ambitious project has captured the imagination of our members and supporters.

Obviously, the COVID -19 lockdown restrictions will impact our ability to progress ... but some work can be commenced with the help of contractors.

We have removed and reduced overgrown and overhanging shrubs in the three border beds and replanted with a more suitable selection of plants and flowers, which reflect the era during which the garden was built and are sensitive to its purpose as a Memorial space.

Working with the existing large cherry tree and some remaining shrubs, the new planting will provide year round interest and colour, with respect for wildlife. As funds grow we intend to provide more seating and a structural central focal point with plants. We expect it will take us until summer 2022 to complete.



Update!

In 2021 we had the cherry tree pruned with permission from Lancaster City Council, and had many old and straggly bushes removed or pruned.

We spread mushroom compost on the beds and recently added mineralised straw mulch.



We repositioned some plants and planted new perennials and bulbs in the beds and crocuses in the grass.

We've placed stepping stones near the cherry tree.

We removed the foundations and stonework of an outbuilding and made a curved gabion bench filled with moraine stones from the river.

Spring 2022



Update 2022:

Grants and Donations so far received:

Halton Lune Trust, Duchy of Lancaster, DPD Eco Fund, Logs Direct, HiQ Tyres & Autocare, the Lancaster Community Fund, B4RN, and Lancaster County Council Local Member Grant, with fundraising also through our plant sales, and donations from local residents, and we are very grateful to receive them.



Images Janet Theobald April /May 2022

May 2022

